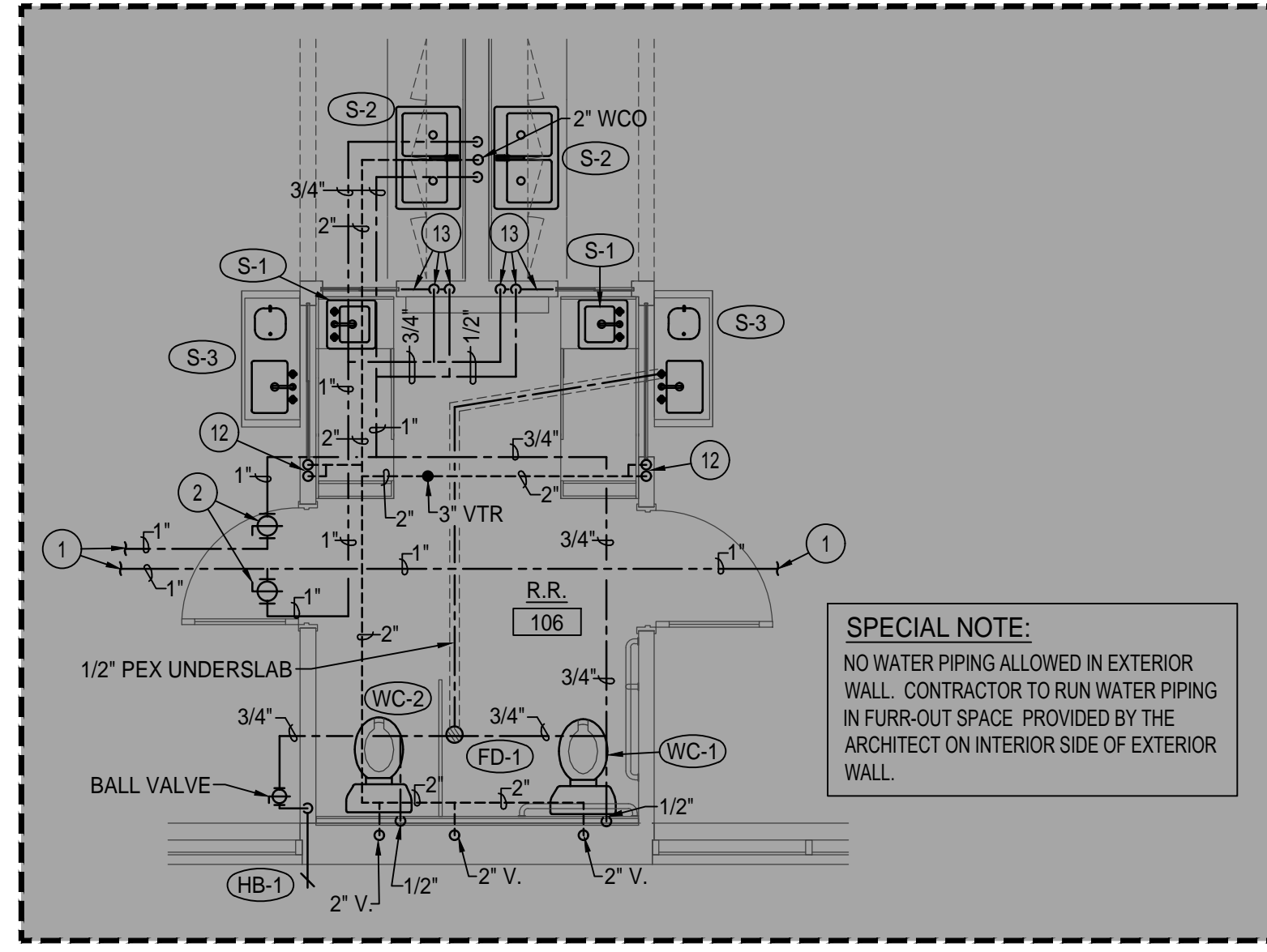


PHASE 2 EXPANSION

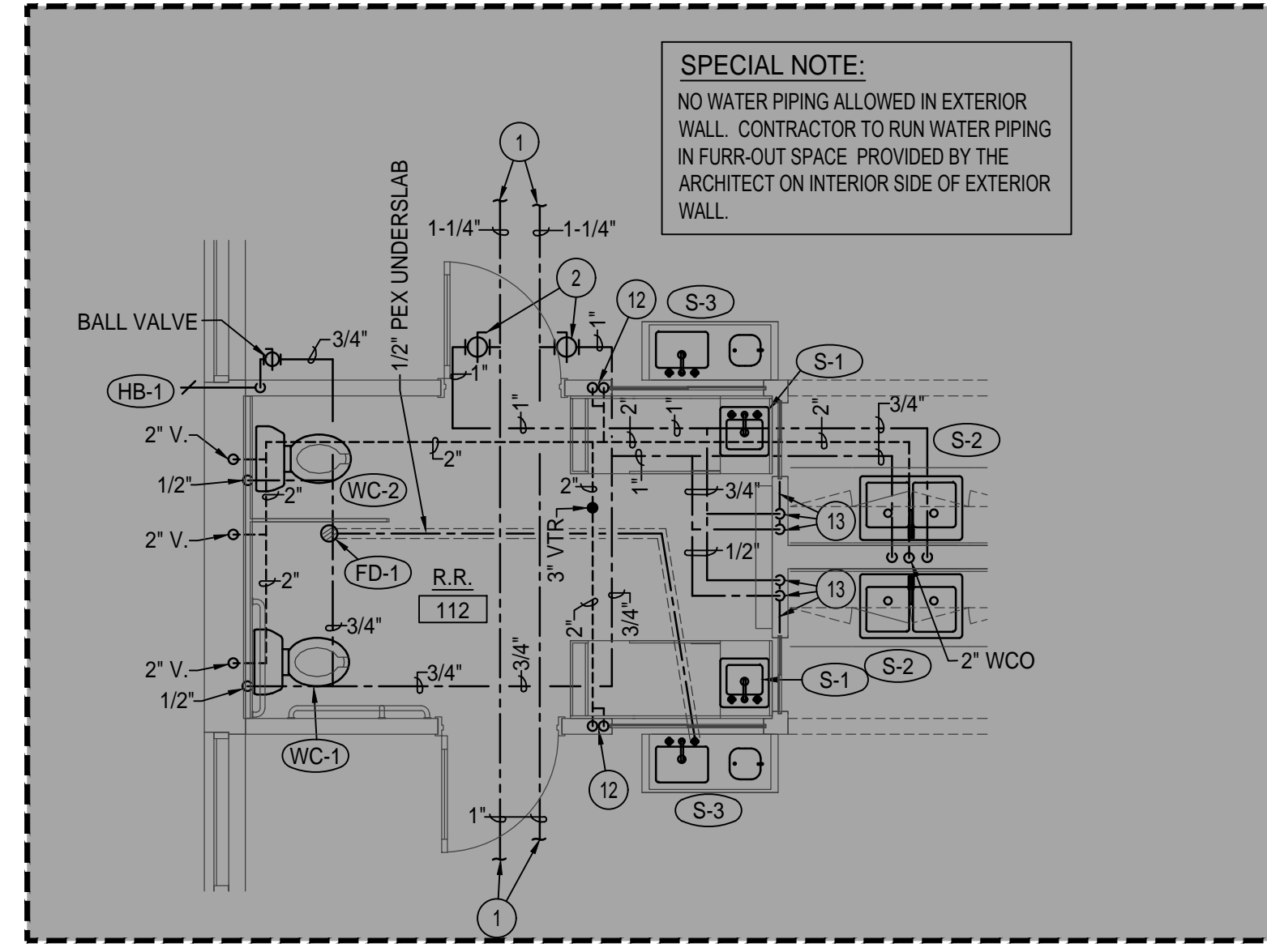


LARGE SCALE RESTROOM 106
PLUMBING PLAN

SCALE: 1/4" = 1'-0"

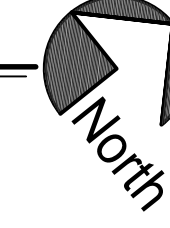


PHASE 2 EXPANSION

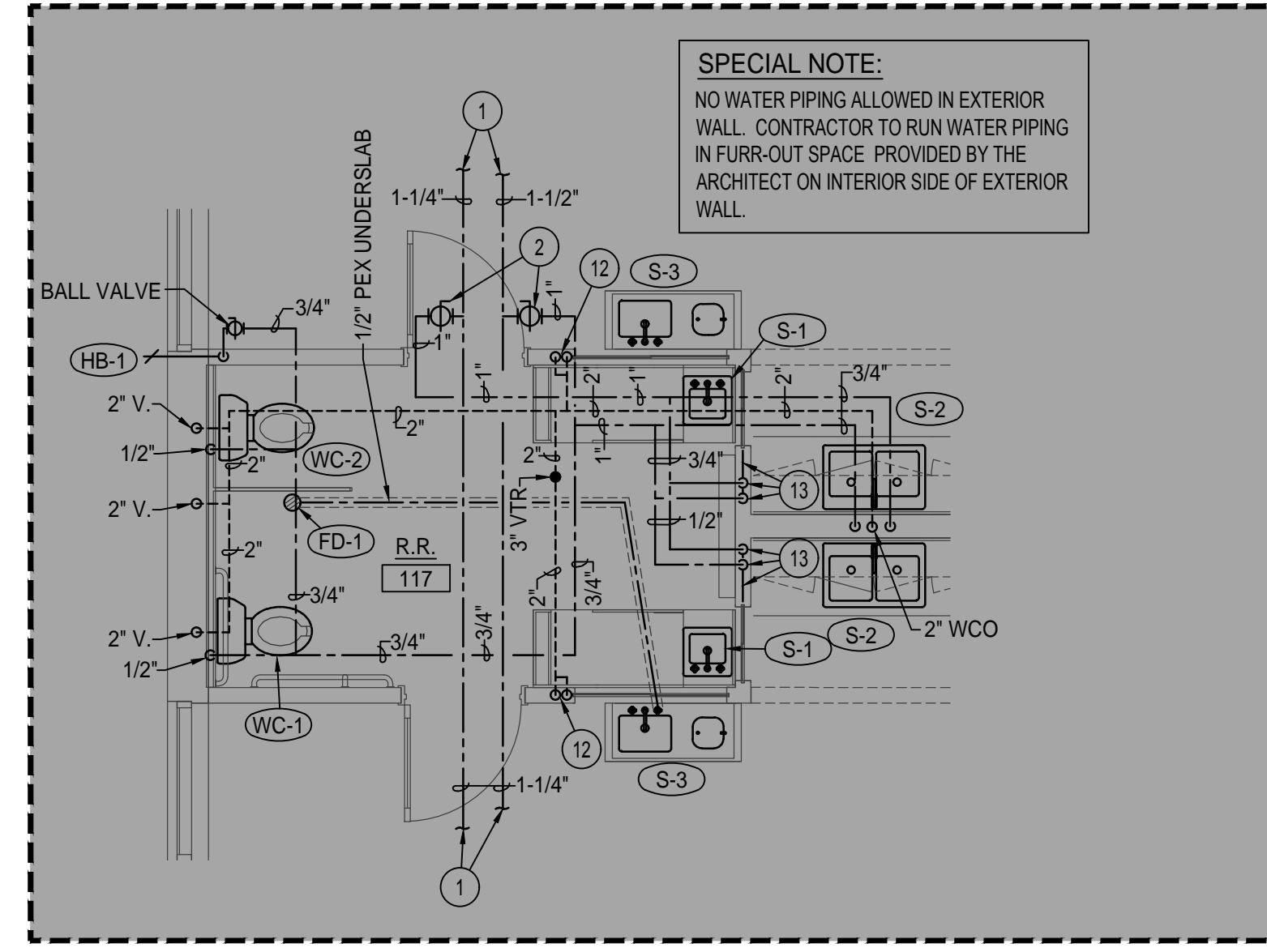


LARGE SCALE RESTROOM 112
PLUMBING PLAN

SCALE: 1/4" = 1'-0"

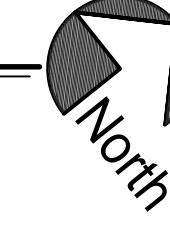


PHASE 2 EXPANSION

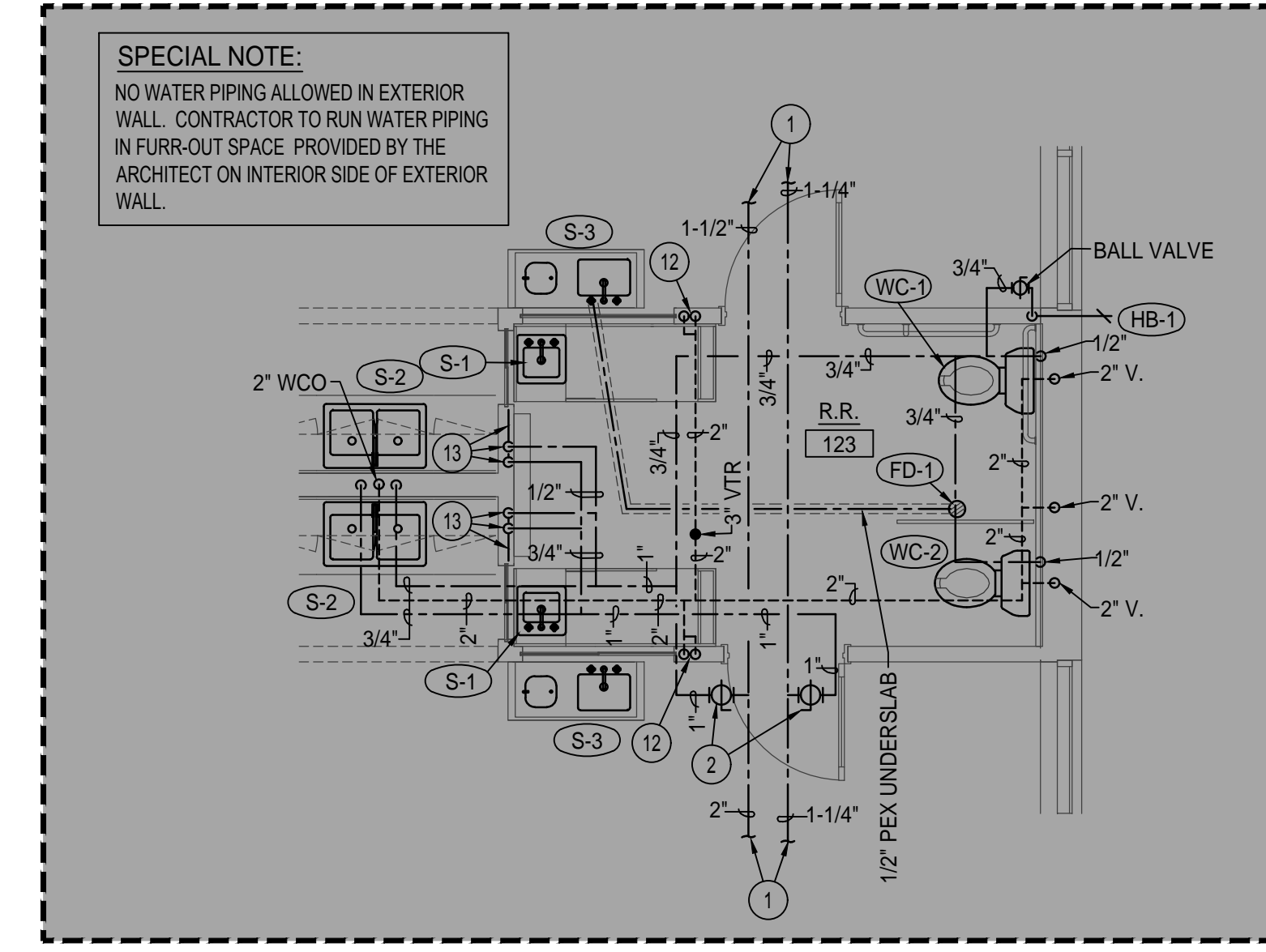


LARGE SCALE RESTROOM 117
PLUMBING PLAN

SCALE: 1/4" = 1'-0"

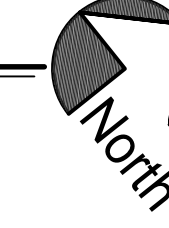


PHASE 2 EXPANSION

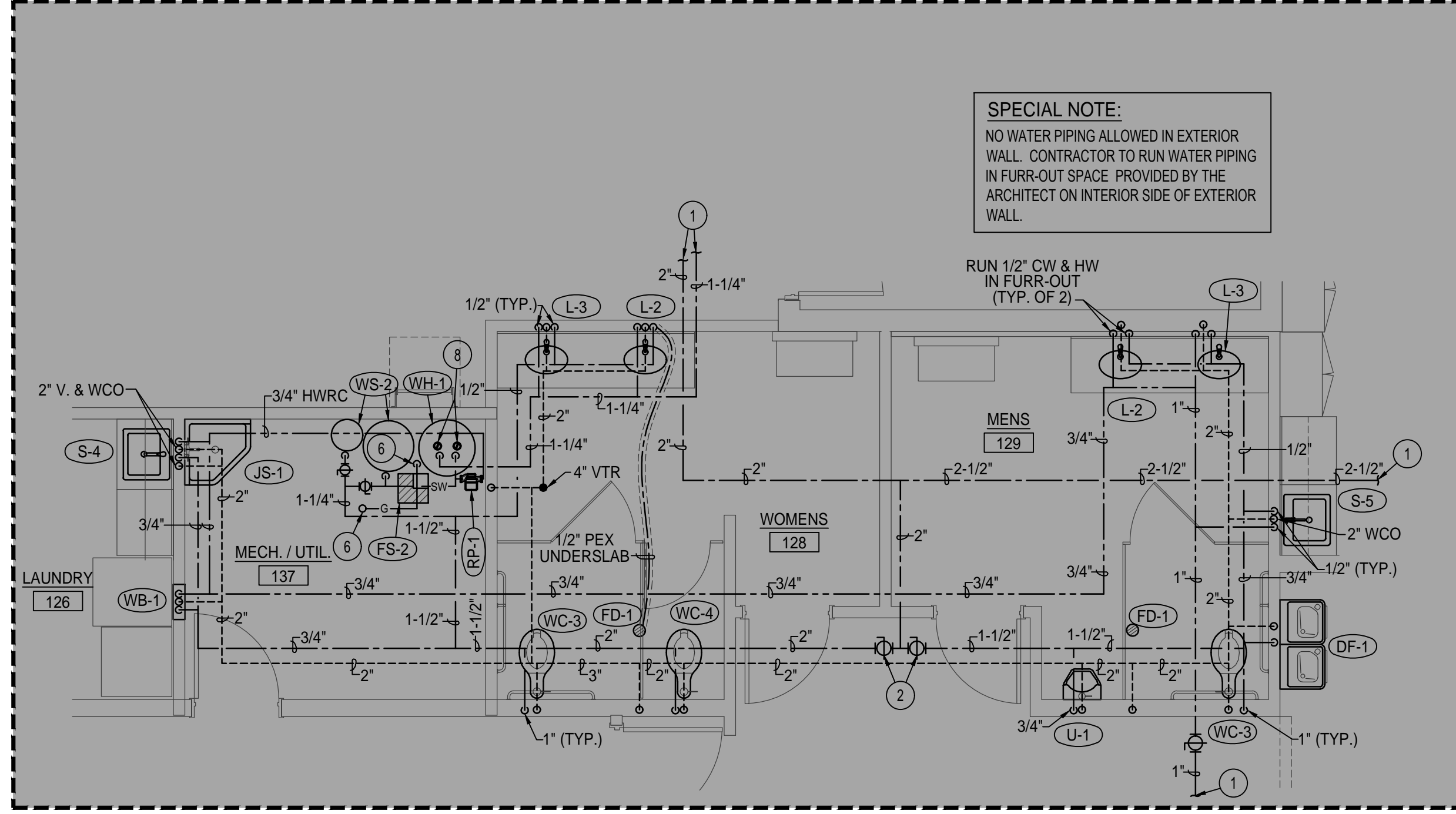


LARGE SCALE RESTROOM 123
PLUMBING PLAN

SCALE: 1/4" = 1'-0"

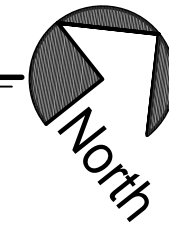


PHASE 2 EXPANSION



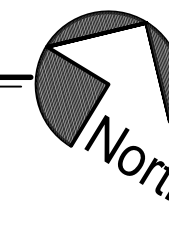
LARGE SCALE TOILET ROOMS
128/129 PLUMBING PLAN

SCALE: 1/4" = 1'-0"



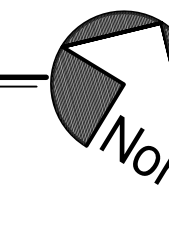
LARGE SCALE RESTROOM 143
PLUMBING PLAN

SCALE: 1/4" = 1'-0"



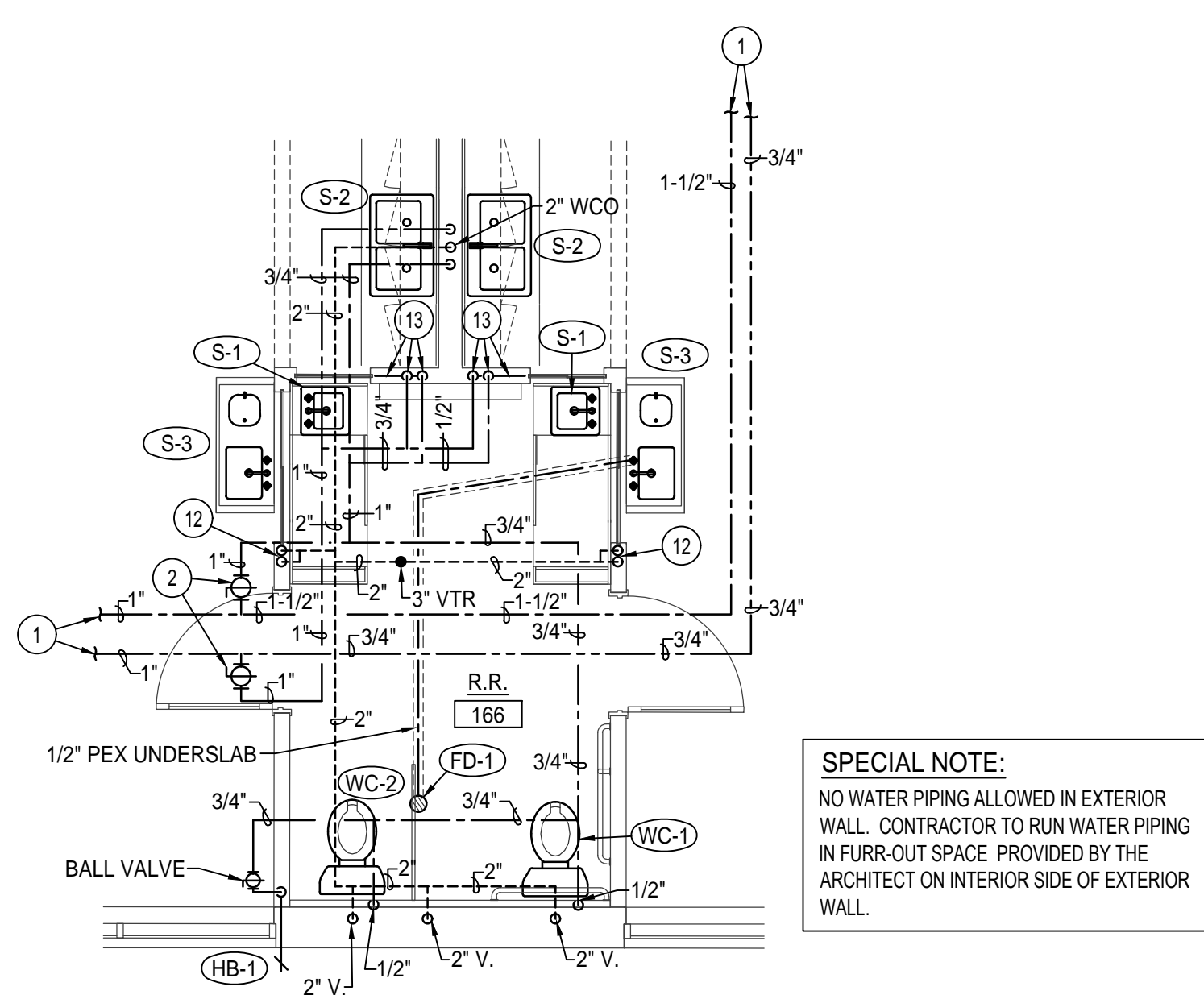
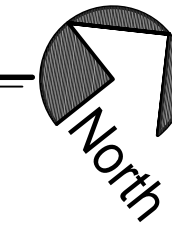
LARGE SCALE RESTROOM 150
PLUMBING PLAN

SCALE: 1/4" = 1'-0"



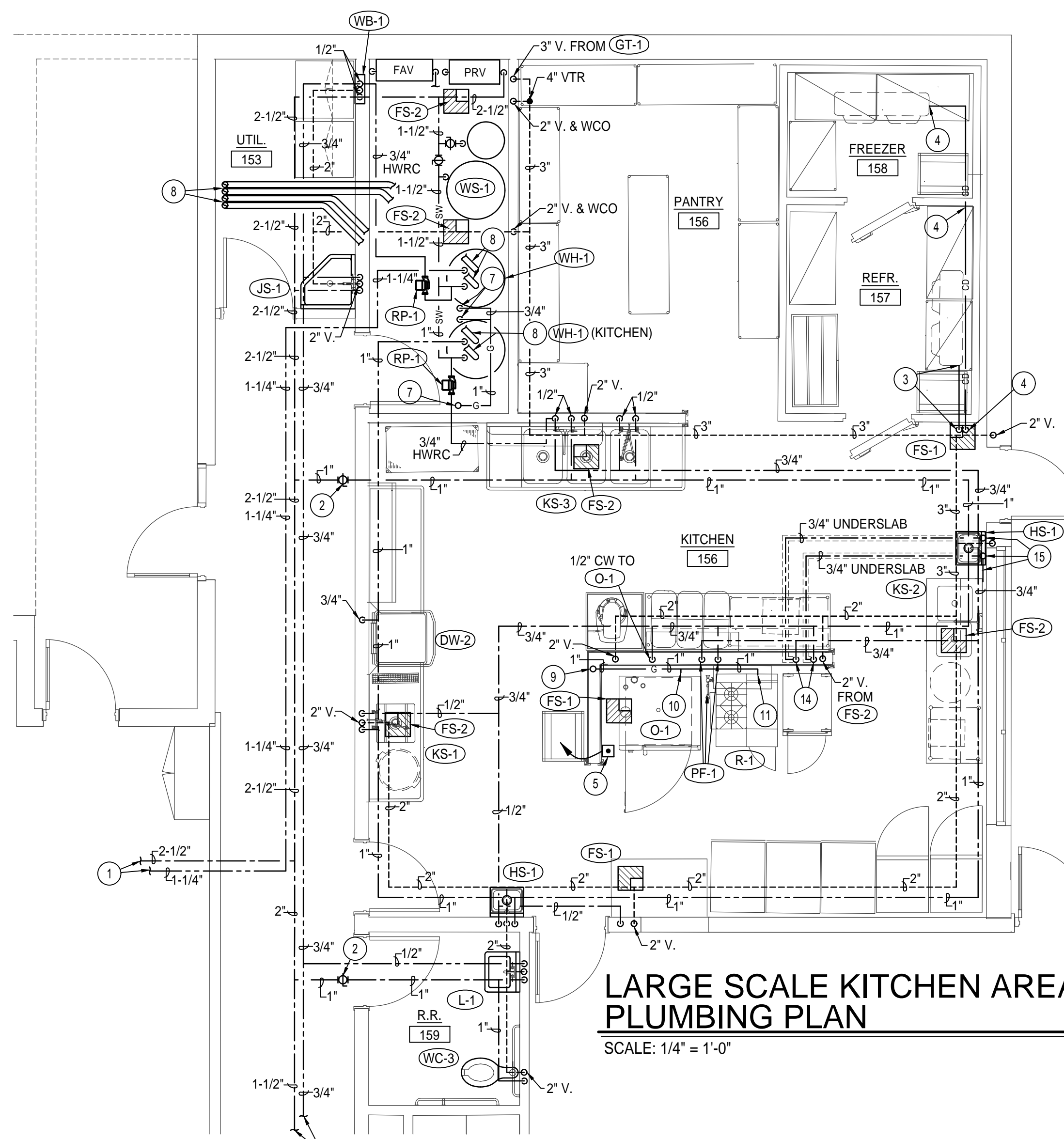
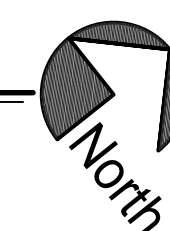
LARGE SCALE RESTROOM 170
PLUMBING PLAN

SCALE: 1/4" = 1'-0"



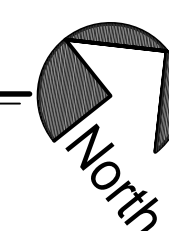
LARGE SCALE RESTROOM 166
PLUMBING PLAN

SCALE: 1/4" = 1'-0"



LARGE SCALE KITCHEN AREA
PLUMBING PLAN

SCALE: 1/4" = 1'-0"



PLAN NOTES:

- SEE SHEET P101 FOR CONTINUATION OF PIPING.
- TYPICAL BALL TYPE ISOLATION VALVE ABOVE LAY-IN CEILING.
- INSTALL 3/4" CONDENSATE DRAIN LINE FROM INDOOR REFRIGERATION UNIT LOCATED IN WALK-IN REFR. AND RUN AS HIGH AS POSSIBLE AT CEILING. DROP DOWN EXPOSED ON WALL OF UNIT TO FLOOR SINK AND TERMINATE WITH 90° DOWNTURNED ELBOW WITH AIRGAP. CONDENSATE LINE IN FREEZER TO BE HEAT TRACED.
- INSTALL 3/4" CONDENSATE DRAIN LINE FROM INDOOR REFRIGERATION UNIT LOCATED IN FREEZER AND RUN AS HIGH AS POSSIBLE AT CEILING. DROP DOWN EXPOSED ON WALL OF UNIT TO FLOOR SINK AND TERMINATE WITH 90° DOWNTURNED ELBOW WITH AIRGAP. CONDENSATE LINE IN FREEZER TO BE HEAT TRACED.
- INSTALL PUSH BUTTON EMERGENCY GAS SHUT-OFF SWITCH FOR ALL GAS FIRED KITCHEN EQUIPMENT AND MAKE-UP AIR UNIT LOCATED ON ROOF. INTERLOCK SWITCH WITH EMERGENCY GAS SOLENOID VALVE LOCATED ON ROOF (SEE SHEET P102) SERVING ALL GAS FIRED KITCHEN EQUIPMENT AND KITCHEN HOOD ANJUL SYSTEM.
- 3/4" (OZ) GAS LINE DOWN FROM ROOF ABOVE. RUN IN CEILING SPACE AND DROP DOWN TO WATER HEATER AND CONNECT. INSTALL SHUT-OFF VALVE, DIRT LEG AND FLEXIBLE CONNECTION AT HEATER. SEE GAS PIPING DETAIL ON SHEET P200.
- 1" (OZ) GAS LINE DOWN FROM ROOF ABOVE. RUN IN CEILING SPACE AND DROP DOWN TO WATER HEATERS AND CONNECT WITH 3/4" (OZ) GAS LINES TO EACH HEATER. INSTALL SHUT-OFF VALVE, DIRT LEGS AND FLEXIBLE CONNECTION AT EACH HEATER. SEE GAS PIPING DETAIL ON SHEET P200.
- RISE (2) 3/8" WATER HEATER FLUES UP THRU ROOF TO VERTICAL VENT TERMINATION ASSEMBLY. SEAL ROOF PENETRATION WEATHERTIGHT. SEE WATER HEATER DETAIL ON SHEET P200.
- 1" (OZ) GAS LINE DOWN FROM ROOF ABOVE. DROP IN WALL AND RUN GAS LINE EXPOSED ON WALL BEHIND KITCHEN EQUIPMENT.
- CONNECT 3/4" (OZ) GAS LINE TO GAS FIRED OVEN COMPLETE WITH SWIVEL GAS LINE, SHUT-OFF VALVE AND FLEXIBLE CONNECTION. SEE GAS PIPING DETAIL ON SHEET P200.
- CONNECT 3/4" (OZ) GAS LINE TO GAS RANGE COMPLETE WITH SWIVEL GAS LINE, SHUT-OFF VALVE AND FLEXIBLE CONNECTION. SEE GAS PIPING DETAIL ON SHEET P200.
- RISE (2) 2" VENTS UP IN WALL AS SHOWN. (1) FROM SINK S-1 AND (1) FROM SINK S-3. RUN-VENT PIPING LATERALLY IN WALL BELOW WINDOW HEIGHT.
- DROP 1/2" HW & 1/2" CW LINE DOWN IN WALL AND RUN LATERALLY IN WALL TO SERVE (1) S-1 SINK AND (1) S-3 SINK.
- DROP 3/4" HW & 3/4" CW PIPING DOWN IN WALL AND RUN UNDERSLAB TO SERVE HAND WASH SINK HS-1 AND KITCHEN SINK KS-2. ALL UNDERSLAB PIPING TO BE PEX WITH NO JOINTS ALLOWED UNDERSLAB.
- RISE 3/4" HW & CW PIPING UP THRU SLAB UNDER HAND WASH SINK AND SERVE HANDWASH SINK WITH 1/2" CW & HW LINES. TEE OFF WITH 1/2" CW & 1/2" HW LINES AND RUN UNDERCOUNTER TO SERVE KITCHEN SINK KS-2.
- DROP 1/2" HW & CW LINES DOWN IN WALL TO SERVE BOTH S-1 AND S-2 SINKS.

SPECIAL NOTE:
NO WATER PIPING ALLOWED IN EXTERIOR WALL. CONTRACTOR TO RUN WATER PIPING IN FURR-OUT SPACE PROVIDED BY THE ARCHITECT ON INTERIOR SIDE OF EXTERIOR WALL.

Myers Anderson
Architecture
Interior Design
Historic Preservation
123 South Main Street • Pocatello, Idaho 83204 • Tel: (208) 232-3741 • Fax: (208) 232-3782
927 West Street, Suite 300 • Evanston, Wyoming 82931 • Tel: (307) 899-0884

PROJECT: EVANSTON CHILD DEVELOPMENT CENTER PHASE 1
SHEET TITLE: LARGE SCALE PLUMBING PLANS
CONTRACTOR SHALL VERIFY ALL DIMENSIONS & CONDITIONS SHOWN OR IMPLIED.
DRAWING SCALE APPLIES TO 36" X 48" SHEET SIZE.
REVISION: _____ DATE: _____
DRAWN BY: _____
CHECKED BY: _____
JOB NUMBER: 14371-19A
PROJECT DATE: JUNE 2021
SHEET: P103
ES&B NUMBER: 20075

Engineered Systems Associates
1355 EAST CENTER
POCATELLO, IDAHO 83201
PHONE: (208) 233-0501
FAX: (208) 233-0529
EMAIL: esa@engsys.com
ESA JOB NUMBER: 20075